

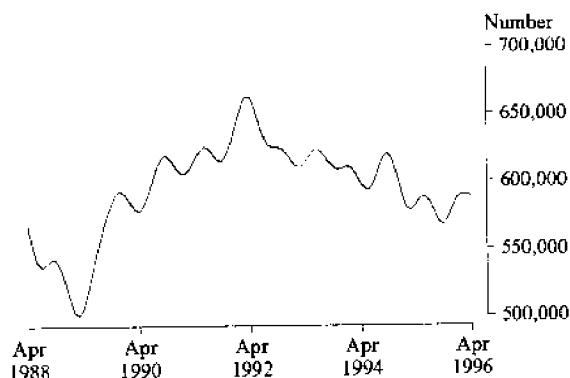
**LIVESTOCK PRODUCTS, AUSTRALIA  
APRIL 1996**

**MAIN FEATURES**

**Livestock Slaughtering**

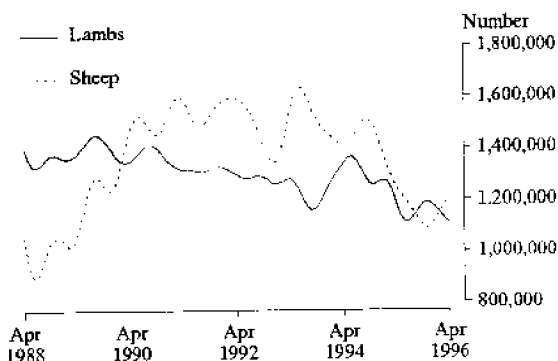
The trend estimate for cattle slaughtering in April 1996 fell for the first time in six months. However, it is 3.7% above the last trough in October 1995. Although the trend estimate for calves continued to decline, the rate of decline slowed from 1.4% in March 1996 to 0.5% in April 1996.

**CATTLE SLAUGHTERINGS  
AUSTRALIA  
Trend Series**



The trend estimate for sheep slaughtering rose for the fifth consecutive month and is 10.9% above the last trough in November 1995. The trend estimate for lamb slaughtering fell by 1.5 per cent and is 6.9 per cent lower than the last peak in November 1995.

**SHEEP AND LAMB SLAUGHTERINGS  
AUSTRALIA  
Trend Series**



In April 1996, the trend estimate for pig slaughtering declined marginally and since November 1994 has fallen 10.8%.

**Red Meat**

The trend estimate for total red meat production in April 1996 rose for the sixth consecutive month and is 3.4% above the last trough in October 1995. In April 1996, beef production again rose although at a slower rate than in the previous five months. It is 5.6% above the last trough in October 1995. Mutton rose for the fifth consecutive month and is 11.1% above the last trough in November 1995. The trend estimate for lamb continued to fall at a steady rate and is 6.5% below the last peak in November 1995. Pigmeat continued to decline steadily for the eleventh consecutive month and in April 1996 is 10.9% below the last peak in May 1995.

**Chicken Meat**

Although the trend estimate for chicken meat production declined marginally in March 1996, it rose 0.6% in April 1996 and is 4.3% above the last trough in June 1995.

**Whole Milk Intake**

Following a marginal increase in February 1996, the trend estimate for whole milk intake by factories fell 0.1% in March 1996. The trend estimate is 0.7% below the last peak in September 1995.

**Wool Receivals by Brokers and Dealers**

The trend estimate for wool receivals by brokers and dealers continued to rise in April 1996, but the rate of growth has fallen in recent months. Since the last trough in September 1995 it has risen 30.8%.

**Live Exports**

The number of live sheep exported in March rose by 13.9% to 546,200. The unit value (\$38.43) fell 2.4% and the gross value (\$21.0 million) rose 16.6%.

Live cattle exports rose 10.8% to 54,200 in March 1996. The unit value (\$571.39) fell 2.4%, while gross value (\$30.9 million) rose 8.2%.

**INQUIRIES**

- for further information about statistics in this publication and the availability of related unpublished statistics — contact Joellen Hartig on Canberra (06) 252 6623 or any ABS State office.

for information about other ABS statistics and services — please contact Information Services on Canberra (06) 252 6623 or any ABS State office.

TABLE 1. NUMBERS OF LIVESTOCK SLAUGHTERED  
('000)

	NSW	Vic.	Qld	SA	WA	Tas.	Aust.	Seasonally adjusted	Trend estimate(b)
BULLS, BULLOCKS AND STEERS (a)									
1992-93	1,072.7	778.3	1,713.1	258.6	271.9	99.0	4,256.4	..	..
1993-94	1,008.5	772.0	1,700.5	199.0	271.2	101.8	4,070.0	..	..
1994-95	1,105.6	782.7	1,597.1	206.1	244.0	111.0	4,056.4	..	..
1994-95 —									
February	83.0	66.3	95.7	17.8	19.1	9.5	291.4	316.4	329.1
March	100.7	66.2	113.8	21.0	23.4	13.0	338.2	321.3	324.8
April	80.2	59.8	109.2	13.1	14.1	9.5	286.0	313.6	325.6
May	94.2	72.4	125.7	17.6	18.0	10.9	339.5	316.4	328.7
June	79.8	76.2	163.8	12.7	18.4	10.5	362.9	373.4	331.1
1995-96 p—									
July	74.8	68.9	134.9	7.6	17.1	8.1	312.8	322.7	330.2
August	88.0	69.4	159.6	11.4	18.7	5.0	358.0	329.9	325.4
September	78.5	63.0	153.0	19.4	17.4	5.6	338.9	311.2	319.7
October	78.1	80.4	110.2	21.6	21.2	7.0	320.7	301.5	316.6
November	85.7	85.7	137.3	23.0	28.1	8.8	370.9	321.0	318.1
December	68.3	77.2	93.0	15.4	22.8	9.5	287.5	327.3	324.0
January	83.6	89.1	57.3	16.9	19.3	11.2	277.6	331.7	330.4
February	93.1	87.9	95.3	18.4	19.8	8.6	323.6	337.1	335.5
March	97.5	86.9	118.2	16.8	18.8	9.0	347.6	348.0	339.3
April	86.5	79.5	108.5	13.1	17.2	6.6	311.7	330.9	341.8
COWS AND HEIFERS (a)									
1992-93	985.5	587.5	1,138.3	149.7	180.5	90.4	3,186.2	..	..
1993-94	979.4	622.0	1,081.4	201.4	167.6	85.2	3,220.1	..	..
1994-95	945.4	684.6	960.7	218.1	186.4	96.9	3,165.6	..	..
1994-95 —									
February	66.5	52.3	60.2	21.5	17.2	8.5	229.3	231.2	251.6
March	78.4	67.0	80.0	25.1	17.2	12.0	283.7	261.3	252.8
April	72.5	52.8	65.6	19.8	14.6	9.8	238.3	251.3	255.1
May	96.0	65.3	112.3	22.3	14.8	10.3	327.1	264.9	256.6
June	86.7	57.5	94.9	21.1	10.1	10.3	290.4	266.0	256.7
1995-96 p—									
July	75.0	44.6	76.0	13.1	12.0	5.8	232.3	243.4	255.4
August	83.6	44.6	90.4	16.0	15.1	4.8	262.2	255.5	253.3
September	79.1	43.2	86.7	17.2	17.6	4.4	259.5	252.8	252.4
October	77.1	51.2	67.0	16.2	16.6	6.3	241.8	248.3	254.3
November	84.0	57.3	68.8	17.8	15.6	7.1	257.9	256.2	257.1
December	68.2	48.5	51.5	13.9	17.2	7.6	212.5	259.1	259.0
January	79.3	59.0	40.3	21.1	18.7	6.8	229.7	266.2	258.1
February	83.5	57.9	74.1	18.3	22.7	7.8	268.2	263.3	255.0
March	76.5	45.3	86.2	15.7	17.7	8.9	253.9	251.7	250.5
April	73.1	38.3	73.2	14.5	13.7	6.4	223.0	225.4	245.3

TABLE 1. NUMBERS OF LIVESTOCK SLAUGHTERED  
('000) --continued

	NSW	Vic.	Qld	SA	WA	Tas.	Aust.	Seas- onally adjusted	Trend estimate(b)
TOTAL CATTLE (excludes calves) (a)									
1992-93	2,058.1	1,365.8	2,851.5	408.3	452.3	189.4	7,442.6	..	..
1993-94	1,987.9	1,393.9	2,781.8	400.3	438.8	187.0	7,290.1	..	..
1994-95	2,051.0	1,467.3	2,557.8	424.3	430.5	207.9	7,222.0	..	..
1994-95 —									
February	149.6	118.6	155.9	39.3	36.3	17.9	520.7	552.1	580.8
March	179.1	133.2	193.8	46.1	40.6	25.0	622.0	580.7	578.8
April	152.7	112.5	174.8	32.9	28.7	19.3	524.3	570.4	582.6
May	190.2	137.7	237.9	39.9	32.9	21.2	666.6	589.5	587.5
June	166.5	133.7	258.7	33.8	28.6	20.8	653.2	631.0	589.4
1995-96 p—									
July	149.9	113.5	210.9	20.7	29.2	13.9	545.1	570.8	585.9
August	171.6	114.0	250.0	27.4	33.8	9.8	620.2	581.2	577.9
September	157.5	106.2	239.7	36.6	35.0	10.0	598.4	567.7	570.1
October	155.3	131.6	177.2	37.8	37.8	13.3	562.5	544.6	568.1
November	169.7	143.0	206.0	40.9	43.8	15.9	628.8	574.3	572.5
December	136.5	125.7	144.6	29.3	40.0	17.2	500.1	581.3	580.7
January	162.9	148.1	97.6	37.9	38.0	17.9	507.3	596.8	587.3
February	176.7	145.8	169.4	36.7	42.6	16.4	591.7	598.7	590.5
March	174.0	132.2	204.4	32.6	36.4	17.9	601.4	608.7	590.8
April	159.6	117.7	181.7	27.6	31.0	13.0	534.8	554.0	589.4
CALVES									
1992-93	224.2	608.5	153.8	9.2	4.6	32.7	1,034.1	..	..
1993-94	221.4	583.4	148.7	8.8	4.4	23.2	991.6	..	..
1994-95	248.3	635.6	115.7	12.0	4.4	29.2	1,047.3	..	..
1994-95									
February	17.9	4.8	8.8	0.6	0.3	0.1	32.7	80.9	84.1
March	25.0	11.0	10.1	1.2	0.4	0.4	48.3	86.8	82.9
April	17.0	24.3	8.1	0.8	0.3	1.0	51.7	77.8	82.6
May	21.3	47.6	10.5	1.3	0.3	1.2	82.4	81.1	82.7
June	23.0	74.2	10.9	1.1	0.2	0.9	110.6	89.6	82.8
1995-96 p—									
July	18.9	81.6	9.6	1.1	0.3	1.1	112.6	85.8	82.8
August	24.2	137.0	8.9	1.4	0.3	14.0	185.8	72.0	82.9
September	19.8	119.3	7.3	1.2	0.2	16.6	164.6	88.6	83.1
October	18.5	53.8	7.4	1.0	0.2	5.3	86.3	81.3	83.3
November	23.1	19.9	6.7	0.7	0.2	0.8	51.7	83.8	83.1
December	13.7	9.7	5.6	0.6	0.2	0.5	30.5	86.5	82.7
January	21.2	7.7	6.4	0.7	0.3	0.1	36.4	81.1	81.8
February	20.6	5.3	6.4	0.6	0.2	0.1	33.4	78.7	80.7
March	21.2	8.4	7.2	1.4	0.2	0.2	38.8	77.5	79.5
April	19.0	27.3	6.7	1.8	0.2	0.9	55.9	81.1	79.1

TABLE 1. NUMBERS OF LIVESTOCK SLAUGHTERED  
(<sup>'000</sup>)—continued

	NSW	Vic.	Old	SA	WA	Tas.	Aust.	Seasonally adjusted	Trend estimate(b)
SHEEP									
1992-93	5,233.6	3,722.6	1,389.2	2,769.7	3,752.3	473.4	17,525.0	..	..
1993-94	6,066.9	3,975.9	856.6	3,078.3	2,952.2	526.1	17,641.0	..	..
1994-95	6,577.8	3,229.6	480.2	3,114.4	2,438.1	569.3	16,559.2	..	..
1994-95 —									
February	488.9	330.6	28.0	277.9	219.6	58.6	1,414.2	1,299.5	1,330.6
March	560.6	295.1	37.8	321.5	242.0	68.6	1,537.6	1,312.2	1,288.1
April	457.5	182.6	34.5	245.6	181.2	46.3	1,161.1	1,235.7	1,254.1
May	557.6	186.2	39.1	219.9	198.5	43.6	1,258.7	1,222.3	1,225.6
June	434.3	147.3	38.6	116.0	145.9	42.8	935.0	1,197.2	1,203.7
1995-96 p—									
July	452.8	150.0	37.6	87.4	145.0	18.6	902.1	1,191.7	1,180.9
August	437.3	160.7	38.4	128.0	191.2	18.2	984.4	1,171.4	1,153.5
September	434.3	197.4	38.9	189.7	161.6	18.0	1,050.2	1,107.0	1,123.6
October	524.5	279.5	29.7	206.9	194.9	25.5	1,270.6	1,172.7	1,099.0
November	410.3	279.3	29.5	240.3	233.4	36.5	1,243.3	1,028.5	1,088.5
December	398.0	208.8	26.4	167.7	196.2	44.8	1,050.9	1,004.2	1,096.6
January	503.3	247.2	31.2	237.2	199.0	43.6	1,272.6	1,153.6	1,119.6
February	532.9	260.9	37.6	277.5	195.5	39.8	1,355.6	1,198.3	1,149.6
March	557.5	220.8	42.3	242.2	193.6	40.6	1,307.8	1,171.2	1,180.5
April	534.6	243.6	36.1	154.0	183.8	31.4	1,194.4	1,229.9	1,206.6
LAMBS									
1992-93	4,140.2	6,288.1	648.0	2,062.3	1,480.8	456.5	15,434.9	..	..
1993-94	3,991.7	5,600.8	669.6	2,363.8	1,553.2	437.8	14,967.2	..	..
1994-95	4,133.7	6,303.2	469.8	1,914.8	1,263.7	477.2	14,950.7	..	..
1994-95 —									
February	292.1	478.4	27.2	165.1	113.3	37.1	1,143.8	1,256.1	1,269.2
March	352.0	522.8	46.7	191.0	117.2	48.3	1,316.4	1,228.7	1,239.8
April	318.6	464.2	46.8	141.2	97.7	41.1	1,145.2	1,218.2	1,190.8
May	337.7	512.0	52.0	143.7	96.2	41.1	1,218.6	1,120.3	1,141.9
June	269.2	453.2	44.6	110.7	61.8	44.8	1,005.4	1,072.4	1,114.1
1995-96 p—									
July	274.3	449.5	38.1	97.5	53.5	25.6	960.6	1,086.8	1,113.2
August	324.1	494.8	40.1	167.0	92.3	27.3	1,176.1	1,106.5	1,132.9
September	306.5	524.5	39.5	214.0	149.6	29.0	1,290.8	1,224.8	1,158.7
October	308.9	614.9	37.3	223.6	153.1	28.6	1,393.4	1,194.4	1,182.7
November	279.5	578.7	32.8	200.8	127.4	34.9	1,287.7	1,194.0	1,193.1
December	240.2	485.2	33.4	140.6	79.2	40.5	1,043.2	1,176.9	1,185.9
January	284.5	498.1	38.8	129.5	74.9	38.9	1,097.3	1,175.6	1,168.6
February	285.0	464.2	37.3	162.9	88.6	40.4	1,104.0	1,160.9	1,148.7
March	295.0	454.4	40.3	167.3	110.3	41.2	1,131.0	1,128.2	1,127.9
April	318.2	399.7	40.2	144.3	113.6	30.7	1,071.5	1,077.3	1,111.1

TABLE 1. NUMBERS OF LIVESTOCK SLAUGHTERED  
(\*000)—continued

	NSW	Vic.	Qld	SA	WA	Tas.	Aust.	Seasonally adjusted	Trend estimate(b)
PIGS									
1992-93	1,480.5	1,070.8	1,155.3	568.2	567.6	92.5	5,031.7	..	..
1993-94	1,490.9	1,188.5	1,207.9	562.1	550.4	95.8	5,190.2	..	..
1994-95	1,505.4	1,196.9	1,154.4	469.6	604.1	92.9	5,120.1	..	..
1994-95 —									
February	114.4	89.9	91.2	42.2	46.2	7.0	398.0	429.5	423.6
March	131.8	106.7	103.2	32.8	52.8	8.8	444.7	415.9	421.3
April	113.0	85.9	85.7	30.1	51.0	7.2	380.2	405.5	420.2
May	132.8	114.9	100.4	43.0	56.3	8.2	464.8	425.1	419.6
June	139.4	106.7	107.0	34.2	57.5	8.6	459.9	437.8	417.9
1995-96 p—									
July	117.9	87.9	86.5	33.4	52.6	6.5	391.9	407.6	414.9
August	120.2	100.5	96.1	37.5	52.4	7.3	422.4	403.9	411.1
September	127.0	93.2	97.5	32.4	50.5	7.1	414.8	412.4	407.1
October	114.1	97.1	85.0	30.8	48.7	6.1	388.5	398.5	404.0
November	118.1	96.6	90.1	36.6	47.0	6.9	403.4	395.5	402.1
December	138.0	101.2	95.4	28.3	41.8	8.4	419.7	412.5	400.7
January	108.5	90.3	79.0	30.6	39.9	6.1	361.6	398.7	397.9
February	107.1	92.4	87.1	33.6	47.2	6.3	379.9	391.9	394.1
March	114.4	92.6	96.0	28.0	48.6	7.2	392.9	393.5	389.9
April	107.2	93.9	80.9	28.4	46.6	6.0	368.9	377.0	386.4

(a) Domesticated buffaloes slaughtered in the Northern Territory are included in Australian totals. (b) Trend estimates for the most recent months are subject to revision when data for subsequent months become available.

TABLE 2. RED MEAT PRODUCED (a)  
(Tonnes carcass weight)

	NSW	Vic.	Qld	SA	WA	Tas.	Aust.	Seasonally adjusted	Trend estimate(b)
BEEF (c)									
1992-93	472,313	299,907	753,477	96,338	100,196	44,925	1,786,860	..	..
1993-94	466,387	315,279	742,701	94,395	101,513	47,458	1,786,224	..	..
1994-95	471,183	335,059	697,750	99,108	97,140	49,827	1,765,527	..	..
1994-95 —									
February	34,356	26,446	44,006	9,445	8,267	4,547	127,706	135,155	141,638
March	42,031	30,505	53,539	11,094	9,373	5,931	153,279	138,993	140,649
April	35,011	25,433	48,232	7,764	6,498	4,370	127,870	141,557	141,059
May	42,774	31,384	63,477	9,421	7,333	4,881	160,569	141,420	141,789
June	36,792	30,983	65,044	7,719	6,182	4,864	153,665	147,863	142,308
1995-96 p—									
July	34,180	25,310	57,540	3,526	6,151	3,569	131,553	139,648	142,011
August	39,259	23,804	68,083	6,588	7,515	2,312	150,288	142,598	140,598
September	36,128	23,831	64,916	8,850	7,872	2,354	146,288	140,954	139,009
October	34,610	30,513	47,280	9,382	9,292	3,151	136,074	131,999	138,616
November	41,089	33,584	57,379	9,914	10,283	3,846	157,845	140,039	139,658
December	32,032	28,778	40,111	7,059	9,066	4,145	122,460	139,302	141,671
January	38,019	34,722	26,817	9,208	8,359	4,467	122,583	145,414	143,708
February	42,187	33,838	46,359	9,065	9,719	4,122	146,045	150,394	145,182
March	42,218	30,860	54,511	8,091	8,297	4,175	148,927	148,890	145,971
April	37,524	27,742	48,215	6,784	7,233	3,012	131,325	138,486	146,410
VEAL									
1992-93	15,448	14,948	7,179	320	303	692	38,954	..	..
1993-94	17,551	13,466	6,352	302	296	515	38,581	..	..
1994-95	16,677	14,428	4,918	433	287	1,059	37,926	..	..
1994-95 —									
February	1,198	203	365	25	22	8	1,828	2,813	2,968
March	1,751	328	448	39	25	18	2,621	3,242	2,885
April	1,114	582	336	27	17	36	2,119	2,569	2,837
May	1,439	1,072	484	35	16	39	3,100	2,758	2,824
June	1,623	1,572	482	32	14	38	3,770	2,919	2,846
1995-96 p—									
July	1,286	1,642	425	31	17	30	3,438	2,907	2,892
August	1,659	2,773	357	39	19	353	5,208	2,853	2,954
September	1,327	2,416	274	36	16	418	4,494	3,180	3,001
October	1,299	1,170	292	32	16	141	2,957	2,913	3,021
November	1,482	496	263	26	17	24	2,318	3,074	2,995
December	857	295	219	20	17	17	1,431	2,970	2,945
January	1,448	251	229	22	16	4	1,979	2,865	2,878
February	1,385	211	241	21	14	5	1,883	2,738	2,807
March	1,413	271	270	41	11	9	2,023	2,821	2,738
April	1,259	648	242	48	11	26	2,240	2,595	2,689

TABLE 2. RED MEAT PRODUCED (a)  
(Tonnes carcass weight)—continued

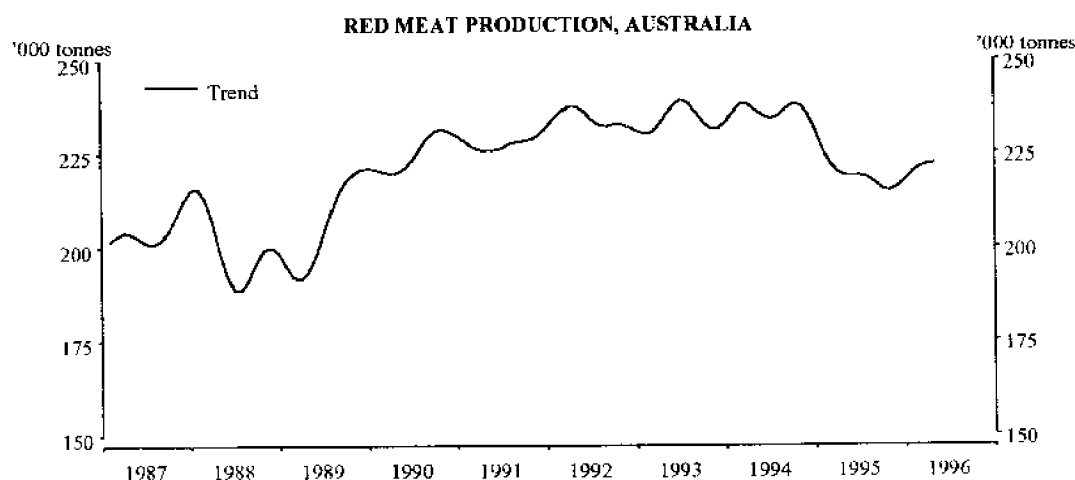
	NSW	Vic.	Qld	SA	WA	Tas.	Aust.	Seasonally adjusted	Trend estimate(b)
MUTTON									
1992-93	105,819	81,907	26,656	65,689	76,921	8,949	369,953	..	..
1993-94	127,582	85,010	17,326	71,354	61,731	9,992	376,764	..	..
1994-95	131,052	64,440	9,479	66,759	47,776	11,230	333,668	..	..
1994-95 —									
February	9,366	6,431	560	5,883	4,320	1,130	27,873	25,636	26,666
March	10,960	5,578	744	6,768	4,728	1,311	30,322	26,039	25,692
April	8,894	3,478	672	5,054	3,484	884	22,655	24,762	24,978
May	10,509	3,695	763	4,543	3,829	895	24,471	24,281	24,508
June	8,400	2,917	763	2,490	2,794	877	18,452	23,687	24,316
1995-96 p—									
July	9,155	2,978	715	1,967	2,779	389	18,206	24,507	24,156
August	9,000	3,240	731	3,061	3,822	378	20,474	25,173	23,883
September	9,267	4,092	763	4,525	3,094	372	22,300	22,484	23,525
October	11,505	5,850	578	5,002	3,875	529	27,520	25,117	23,260
November	8,989	5,903	566	6,001	4,518	797	27,068	21,915	23,230
December	8,863	4,363	507	3,900	3,926	983	22,710	20,717	23,523
January	11,479	5,080	619	5,711	3,995	937	28,035	25,815	24,088
February	11,277	5,324	744	6,320	3,851	852	28,606	26,246	24,748
March	11,723	4,425	795	5,468	3,839	860	27,336	24,532	25,381
April	11,334	4,973	685	3,523	3,614	657	25,015	26,089	25,812
LAMB									
1992-93	72,608	113,220	10,570	39,334	23,395	7,456	273,424	..	..
1993-94	69,246	101,386	11,072	45,199	24,936	7,047	265,424	..	..
1994-95	71,738	111,202	7,942	36,147	18,955	8,412	261,886	..	..
1994-95 —									
February	5,085	8,525	473	3,128	1,831	615	20,267	22,254	21,730
March	6,466	9,378	790	3,715	1,718	808	23,386	21,813	21,306
April	5,632	7,884	787	2,691	1,484	689	19,722	20,852	20,599
May	5,971	9,183	867	2,723	1,425	761	21,537	19,605	19,945
June	4,818	7,991	726	2,040	867	829	17,674	18,664	19,716
1995-96 p—									
July	4,955	7,997	643	1,799	963	481	17,257	19,352	19,983
August	5,845	8,997	684	3,204	1,609	514	21,430	19,976	20,641
September	5,519	9,741	715	4,212	2,494	546	23,745	23,280	21,406
October	5,612	11,474	657	4,455	2,438	540	25,718	22,260	22,026
November	5,038	10,771	565	4,017	2,069	659	23,757	22,354	22,273
December	4,437	9,112	564	2,699	1,200	764	19,191	21,628	22,131
January	5,247	9,511	686	2,693	1,323	733	20,782	21,845	21,793
February	5,258	8,870	643	3,213	1,581	761	20,815	21,880	21,437
March	5,392	8,544	695	3,385	1,954	777	21,174	21,030	21,073
April	5,861	7,382	700	2,965	2,011	579	19,967	20,237	20,818

TABLE 2. RED MEAT PRODUCED (a)  
(Tonnes carcass weight)—continued

	NSW	Vic.	Qld	SA	WA	Tas.	Aust.	Seasonally adjusted	Trend estimate(b)
PIGMEAT									
1992-93	94,760	70,535	79,749	38,153	33,562	5,749	328,317	..	..
1993-94	98,606	78,488	84,553	38,394	32,423	6,019	344,260	..	..
1994-95	102,175	84,727	83,143	32,063	37,109	5,982	351,330	..	..
1994-95 —									
February	7,254	6,187	6,608	2,684	2,717	464	26,329	28,850	29,005
March	9,617	7,471	7,302	2,237	3,233	572	31,017	28,890	29,234
April	8,320	6,092	6,207	2,069	3,379	464	26,952	28,522	29,529
May	10,139	8,534	7,406	3,009	3,730	532	33,954	31,429	29,743
June	9,650	8,104	7,822	2,386	3,839	553	32,858	30,455	29,702
1995-96 p—									
July	8,173	6,564	6,293	2,161	3,323	426	27,368	28,206	29,391
August	9,208	7,400	6,954	2,614	3,227	475	30,454	29,312	28,889
September	8,399	6,930	7,167	2,240	3,144	470	28,813	28,003	28,343
October	7,747	7,081	6,249	2,125	3,013	399	27,048	28,377	27,899
November	7,956	7,021	6,449	2,476	2,888	449	27,662	26,499	27,620
December	8,695	7,130	6,612	1,843	2,524	546	27,724	27,848	27,436
January	6,984	6,525	5,493	2,092	2,497	397	24,408	27,562	27,210
February	6,986	6,742	6,091	2,297	2,909	410	25,840	27,256	26,970
March	7,641	6,677	6,815	1,899	3,009	470	26,852	26,407	26,735
April	7,648	6,612	5,803	1,985	2,907	397	25,708	26,194	26,494
TOTAL RED MEAT (c)									
1992-93	760,949	580,516	877,632	239,833	234,378	67,770	2,797,507	..	..
1993-94	779,374	593,630	862,003	249,644	220,899	71,031	2,811,254	..	..
1994-95	792,826	609,856	803,232	234,511	201,266	76,511	2,750,337	..	..
1994-95 —									
February	57,259	47,791	52,012	21,165	17,157	6,763	204,004	214,707	222,006
March	70,824	53,260	62,824	23,852	19,076	8,641	240,625	218,977	219,767
April	58,971	43,468	56,234	17,605	14,863	6,444	199,318	218,262	219,002
May	70,832	53,867	72,998	19,731	16,334	7,108	243,631	219,493	218,809
June	61,285	51,566	74,836	14,667	13,696	7,161	226,419	223,588	218,887
1995-96 p—									
July	57,749	44,491	65,617	9,485	13,234	4,895	197,822	214,620	218,434
August	64,970	46,216	76,809	15,506	16,192	4,031	227,855	219,912	216,964
September	60,640	47,010	73,836	19,863	16,620	4,161	225,640	217,901	215,284
October	60,773	56,087	55,056	20,995	18,634	4,761	219,317	210,667	214,821
November	64,553	57,775	65,223	22,434	19,777	5,775	238,650	213,881	215,776
December	54,884	49,678	48,014	15,521	16,733	6,456	193,517	212,465	217,706
January	63,178	56,089	33,844	19,726	16,190	6,538	197,787	223,501	219,677
February	67,094	54,985	54,078	20,917	18,074	6,150	223,189	228,513	221,145
March	68,388	50,777	63,087	18,884	17,111	6,290	226,313	223,679	221,898
April	63,625	47,357	55,644	15,305	15,776	4,671	204,255	213,601	222,223

(a) Red meat is shown in carcass weight and excludes offal. (b) Trend estimates for the most recent months are subject to revision when data for subsequent months become available. (c) Buffalo meat produced in the Northern Territory is included in Australian totals.





#### RELIABILITY OF APRIL TREND ESTIMATES FOR PRODUCTION OF RED MEAT

Readers should exercise care in the interpretation of trend data as the last six observations, in particular, are likely to be revised with either revisions to the underlying data or the addition of data for the month of May.

The table below shows, for red meat production for the six months ended April:

- trend estimates as published;
- trend estimates assuming an increase in seasonally adjusted data for May of 3% on the April figure;
- trend estimates assuming a decrease in seasonally adjusted data for May of 3% on the April figure.

The percentage change of 3% was chosen because the average absolute monthly percentage change in the seasonally adjusted data since the inception of the series has been 3.26%

	<i>Trend as published</i>	<i>Trend change with seasonally adjusted May estimate</i>	
		+3%	-3%
	(tonnes, carcass weight)		
1995-96p			
November	215,776	215,751	216,021
December	217,706	217,675	218,148
January	219,677	219,686	219,922
February	221,145	221,129	220,504
March	221,898	221,694	219,632
April	222,223	221,607	217,720
May	—	220,937	215,072

**TABLE 3. STOCKS OF FROZEN MEAT(a), AUSTRALIA**  
(Source: Australian Meat and Livestock Corporation)  
(tonnes)

<i>At last Saturday of</i>	<i>Beef(b) and veal</i>	<i>Mutton</i>	<i>Lamb</i>	<i>Pork</i>	<i>Goat</i>	<i>Offal</i>	<i>Total</i>
<i>1994-95 —</i>							
January	30,098	6,244	2,037	1,033	100	7,746	47,258
February	31,916	6,451	2,126	1,160	137	7,870	49,660
March	30,793	6,345	2,359	1,194	93	6,996	47,780
April	31,704	6,356	2,085	1,102	63	6,832	48,142
May	32,536	7,079	2,318	1,736	165	7,299	51,133
June	32,511	6,945	2,144	1,759	113	6,961	50,433
July	31,736	7,034	1,871	1,954	132	7,056	49,783
<i>1995-96 p—</i>							
August	32,644	7,225	2,014	3,561	85	7,219	52,748
September	32,358	7,084	2,411	4,319	54	7,275	53,501
October	30,964	6,752	2,775	3,523	62	6,874	50,950
November	31,790	7,878	2,873	3,466	112	7,207	53,326
December	28,265	8,361	2,446	2,931	112	7,043	49,158
January	29,050	7,687	2,175	3,008	38	6,813	48,771
February	31,481	7,910	2,137	2,147	28	6,981	50,684
March	27,205	7,751	2,181	2,078	26	6,972	46,213

(a) Held in cold stores registered to handle meat for export, and includes meat passed for export, canning and other purposes. Includes boneless and carcass meat.

(b) Includes buffalo meat.

**TABLE 4. EXPORTS OF FRESH, FROZEN AND PROCESSED MEAT(a), AUSTRALIA**  
(tonnes)

	Fresh, chilled or frozen								Pork	Bacon and ham(d)	Canned meat(e)
	Beef(b)(c)		Veal(b)		Mutton(b)		Lamb(b)				
	Bone-in	Bone-out	Bone-in	Bone-out	Bone-in	Bone-out	Bone-in	Bone-out			
1992-93	80,979	739,863	2,087	5,361	80,195	77,394	46,681	5,537	6,974	128	7,270
1993-94	62,662	742,390	1,342	5,818	97,851	70,959	52,719	5,226	5,855	204	10,354
1994-95	59,811	716,750	1,983	6,920	103,259	65,380	48,539	4,595	5,496	160	11,531
1994-95 —											
January	2,659	49,052	38	291	6,765	5,006	2,912	259	296	24	1,012
February	3,604	50,481	104	305	7,035	6,056	3,722	313	244	3	981
March	3,402	61,548	136	325	8,415	6,370	4,472	376	159	7	1,369
April	4,461	56,136	94	183	7,992	5,719	4,302	503	350	24	1,152
May	5,155	59,511	184	275	7,352	5,117	3,700	369	405	19	899
June	5,581	59,167	148	357	5,908	4,617	2,396	390	452	37	1,105
1995-96 p—											
July	5,429	67,711	126	645	5,254	3,867	2,524	433	507	18	1,151
August	3,906	54,863	144	677	4,271	4,249	2,761	445	566	25	1,646
September	4,901	61,857	209	735	5,526	4,575	3,673	631	445	15	1,197
October	5,823	63,650	107	1,009	6,169	5,859	4,849	652	491	17	1,193
November	6,113	59,275	116	416	7,726	7,328	4,886	727	675	1	1,485
December	4,140	64,061	147	249	9,452	6,942	4,921	695	298	36	1,196
January	2,221	40,579	195	76	6,944	5,345	3,001	421	219	—	849
February	3,935	49,340	148	270	7,113	5,213	3,333	684	233	76	1,170
March	4,589	57,887	138	323	9,382	5,703	4,216	711	415	48	1,400

(a) Excludes offal. (b) Factors can be applied to beef, veal, mutton and lamb bone-out figures to derive bone-in carcass weight which, when added to bone-in figures, shows total exports in carcass weight. The factor for beef and veal is 1.5 and for mutton and lamb is 2.0 (Source: Australian Meat and Livestock Corporation). (c) Includes buffalo meat. (d) Cured carcass weight of smoked or cooked bacon and ham. Includes stated net weight of packs of canned bacon and ham. (e) Canned weight. Excludes canned bacon and ham.

TABLE 5. EXPORTS OF LIVE SHEEP(a), AUSTRALIA

	Number ( <sup>'000</sup> )	Gross Weight ( <sup>'000</sup> tonnes)	Gross Value (\$ <sup>'000</sup> )	Unit Value(b) (\$)
1992-93	5,097.1	270.5	121,933	23.92
1993-94	5,429.8	287.4	148,907	27.42
1994-95	5,533.6	283.6	179,086	32.36
1994-95 —				
January	610.6	32.2	19,355	31.70
February	534.6	27.2	17,886	33.45
March	516.4	27.0	17,116	33.14
April	648.9	33.0	23,176	35.71
May	373.7	18.0	14,001	37.46
June	225.0	10.8	8,656	38.47
1995-96 p—				
July	607.0	30.5	25,311	41.70
August	577.3	27.9	24,232	41.97
September	501.6	24.7	20,452	40.77
October	342.2	16.7	13,373	39.08
November	416.9	21.9	14,274	34.24
December	525.5	26.8	20,706	39.40
January	466.5	24.3	18,042	38.68
February	479.6	25.4	17,999	37.53
March	546.2	27.8	20,992	38.43

(a) Excludes sheep for breeding. (b) Obtained by dividing the gross value by the number of sheep exported.

TABLE 6. EXPORTS OF LIVE CATTLE(a), AUSTRALIA

	Number ( <sup>'000</sup> )	Gross Weight ( <sup>'000</sup> tonnes)	Gross Value (\$ <sup>'000</sup> )	Unit Value(b) (\$)
1992-93	148.6	50.4	69,847	470.19
1993-94	234.7	79.9	115,020	489.97
1994-95	385.7	136.5	201,948	523.52
1994-95 —				
January	29.3	11.3	16,403	559.33
February	27.8	10.9	15,892	571.74
March	31.6	11.3	16,651	527.03
April	34.8	12.7	17,955	515.37
May	41.6	13.8	23,456	563.59
June	47.4	16.6	26,687	563.05
1995-96 p—				
July	49.5	17.5	27,432	554.64
August	49.7	16.9	28,009	564.07
September	37.2	12.2	20,360	547.56
October	46.1	15.4	24,904	539.77
November	40.8	14.2	23,261	570.23
December	45.0	16.3	26,200	582.58
January	42.3	15.3	23,752	561.29
February	48.9	17.8	28,612	585.50
March	54.2	20.2	30,945	571.39

(a) Excludes cattle for breeding. (b) Obtained by dividing the gross value by the number of cattle exported.

**TABLE 7. CHICKENS SLAUGHTERED (a)**  
(\*000)

	NSW	Vic.	Qld	SA	WA	Aust. (b)
1992-93	117,085.9	78,614.7	52,454.7	25,396.6	30,575.8	304,127.8
1993-94	129,735.5	85,797.9	54,133.1	28,376.4	31,481.8	329,524.7
1994-95	133,799.9	77,337.1	56,057.2	28,778.9	33,938.6	329,911.8
<i>1994-95 —</i>						
February	10,820.8	6,200.2	4,418.4	2,303.7	2,725.7	26,468.8
March	12,385.8	6,731.2	4,847.0	2,610.5	2,678.9	29,253.4
April	10,444.0	6,520.6	4,605.5	2,782.3	2,742.9	27,095.2
May	10,389.2	6,208.8	4,412.3	2,141.7	2,725.6	25,877.6
June	11,051.0	6,305.2	4,618.3	2,189.9	2,879.0	27,043.4
<i>1995-96 p—</i>						
July	11,164.2	6,528.3	5,408.1	2,420.8	3,040.6	28,562.1
August	10,753.6	5,966.2	4,428.5	2,057.1	2,593.9	25,799.4
September	11,331.8	6,547.5	4,826.6	2,226.2	2,896.9	27,829.1
October	10,537.9	6,470.7	4,112.7	2,178.6	3,069.4	26,369.3
November	11,270.8	6,064.2	4,478.7	2,297.1	2,838.3	26,949.1
December	11,825.8	7,232.2	4,961.0	2,418.9	3,078.2	29,516.2
January	10,904.4	7,100.4	4,844.4	2,369.0	3,018.8	28,236.9
February	11,172.0	6,275.4	4,386.7	2,153.7	2,717.3	26,705.1
March	11,919.2	6,722.5	4,890.0	2,311.9	3,030.4	28,874.0
April	10,519.6	6,306.8	4,505.4	2,313.1	2,922.3	26,567.2

(a) Comprises broilers, fryers and roasters. (b) Excludes Tasmania, the Northern Territory and the Australian Capital Territory.

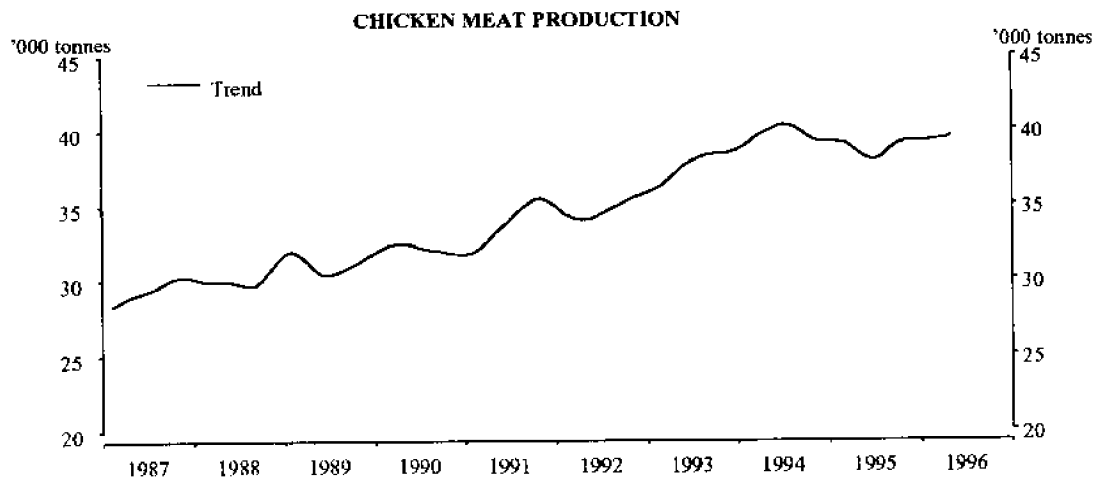
**TABLE 8. CHICKEN MEAT PRODUCED (a)**  
(Tonnes carcass weight)

	NSW	Vic.	Qld	SA	WA	Aust. (b)	Trend estimate(c)
1992-93	176,465	114,587	67,305	38,619	37,740	434,716	..
1993-94	193,137	123,529	72,000	40,671	39,386	468,722	..
1994-95	199,491	110,971	74,477	39,032	42,007	465,977	..
<i>1994-95 —</i>							
February	16,211	9,222	5,879	3,168	3,316	37,796	39,093
March	19,072	9,995	6,437	3,563	3,315	42,383	38,767
April	15,352	9,294	5,896	3,928	3,353	37,823	38,374
May	15,342	8,921	5,898	3,028	3,426	36,615	38,029
June	16,026	8,835	6,141	2,933	3,640	37,575	37,943
<i>1995-96 p—</i>							
July	16,385	9,180	7,153	3,465	3,812	39,996	38,208
August	15,976	9,350	5,550	2,656	3,249	36,781	38,660
September	16,867	9,703	6,210	3,111	3,538	39,429	39,026
October	15,394	9,669	5,277	2,961	3,896	37,197	39,225
November	16,452	9,005	5,703	3,182	3,671	38,014	39,218
December	17,819	10,692	6,396	3,416	3,867	42,190	39,193
January	16,364	9,801	6,186	3,286	3,833	39,471	39,240
February	16,810	9,219	5,750	2,990	3,365	38,135	39,326
March	18,261	9,833	6,496	3,361	3,863	41,814	39,317
April	15,754	9,244	5,783	3,330	3,698	37,809	39,565

(a) Chicken meat is shown in dressed weight of whole birds, pieces and giblets. (b) Excludes Tasmania, the Northern Territory and the Australian Capital Territory.

(c) Trend estimates for the most recent months are subject to revision when data for subsequent months become available.

Note: Some slaughtering and meat production statistics for 'Ducks and Drakes' and 'Other Poultry and Turkeys' are available by contacting the ABS on Canberra 252 5337 or by writing to PO Box 10, Belconnen ACT 2616 (Attention: Agriculture Section).



#### RELIABILITY OF APRIL TREND ESTIMATES FOR CHICKEN MEAT

Readers should exercise care in the interpretation of trend data as the last six observations, in particular, are likely to be revised with either revisions to the underlying data or the addition of data for the month of May.

The table below shows, for chicken meat production for the six months ended April:

- trend estimates as published;
- trend estimates assuming an increase in seasonally adjusted data for May of 4% on the April figure;
- trend estimates assuming a decrease in seasonally adjusted data for May of 4% on the April figure.

The percentage change of 4% was chosen because the average absolute monthly percentage change in the seasonally adjusted data since the inception of the series has been 4.35%

	<i>Trend as published</i>	<i>Trend change with seasonally adjusted May estimate</i>	
		+4%	-4%
	(tonnes, carcass weight)		
1995-96p			
November	39,218	39,249	39,311
December	39,193	39,241	39,349
January	39,240	39,258	39,312
February	39,326	39,287	39,144
March	39,317	39,237	38,765
April	39,565	39,132	38,243
May	—	38,732	37,391

**TABLE 9. WHOLE MILK INTAKE BY FACTORIES (a)**  
(Source: Australian Dairy Corporation)  
(Million Litres)

	<i>NSW</i>	<i>Vic.</i>	<i>Qld</i>	<i>SA</i>	<i>WA</i>	<i>Tas.</i>	<i>Aust.</i>	<i>Seasonally adjusted</i>	<i>Trend estimate(b)</i>
1992-93	997	4,456	702	436	324	413	7,327	..	..
1993-94	1,098	4,967	764	456	344	447	8,077	..	..
1994-95	1,087	5,113	741	484	343	436	8,206	..	..
<i>1994-95 —</i>									
January	97	513	65	42	26	46	789	659	667
February	86	391	58	34	25	36	630	662	661
March	89	340	65	33	28	34	589	653	661
April	81	248	57	32	27	25	469	654	670
May	82	224	57	35	28	19	443	671	684
June	82	213	59	36	28	12	430	734	699
<i>1995-96 p—</i>									
July	87	245	62	39	31	10	474	721	712
August	92	373	63	45	32	19	623	703	719
September	97	586	65	51	32	46	876	724	720
October	105	726	67	55	32	68	1,054	722	718
November	100	689	66	51	28	70	1,005	707	715
December	103	643	71	48	26	65	956	715	715
January	100	563	68	44	26	56	857	717	715
February	87	445	60	36	26	49	702	711	716
March	92	392	60	36	27	46	651	721	715

(a) Includes the whole milk equivalent of farm cream intake. (b) Trend estimates for the most recent months are subject to revision when data for subsequent months become available.

**TABLE 10. MARKET MILK SALES BY FACTORIES (a)**  
(Source: Australian Dairy Corporation)  
(Million Litres)

	<i>NSW</i>	<i>Vic.</i>	<i>Qld</i>	<i>SA</i>	<i>WA</i>	<i>Tas.</i>	<i>Aust.</i>
1992-93	599	449	348	153	177	51	1,777
1993-94	607	454	356	159	181	53	1,811
1994-95	605	452	368	167	188	52	1,832
<i>1994-95 —</i>							
January	50	36	30	14	16	4	150
February	47	35	29	13	15	4	142
March	52	39	33	15	17	5	160
April	50	37	30	13	15	4	149
May	53	40	32	14	17	4	159
June	51	39	31	13	16	4	154
<i>1995-96 p—</i>							
July	53	38	32	13	15	4	156
August	52	40	32	14	16	4	158
September	50	37	31	13	15	4	151
October	52	40	31	14	16	4	157
November	50	37	31	14	15	4	151
December	47	37	30	14	15	4	146
January	50	36	31	13	15	4	151
February	46	37	30	13	16	4	146
March	52	39	63	14	16	4	188

(a) Includes white, flavoured, high and low fat milk, uht milk.



**RELIABILITY OF MARCH TREND ESTIMATES  
FOR WHOLE MILK INTAKE BY FACTORIES**

Readers should exercise care in the interpretation of trend data as the last six observations, in particular, are likely to be revised with either revisions to the underlying data or the addition of data for the month of April.

The table below shows, for whole milk intake by factories for the six months ended March:

- trend estimates as published;
- trend estimates assuming an increase in seasonally adjusted data for April of 2% on the March figure;
- trend estimates assuming a decrease in seasonally adjusted data for April of 2% on the March figure.

The percentage change of 2% was chosen because the average absolute monthly percentage change in the seasonally adjusted data since the inception of the series has been 1.96%

	<i>Trend as published</i>	<i>Trend change with seasonally adjusted April estimate</i>	
		+2%	-2%
	(million litres)		
1995-96p			
October	718	718	718
November	715	715	716
December	715	714	715
January	715	716	715
February	716	718	714
March	715	721	713
April	—	725	713

TABLE 11. BROKERS AND DEALERS RECEIVALS OF TAXABLE WOOL  
(Tonnes)

							Australia			
	NSW	Vic.	Qld	SA	WA	Tas.	Total	% of Total received by brokers	Seas- onally adjusted	Trend estimate(a)
1992-93	252,176	203,572	57,998	109,322	203,626	17,384	844,077	83.3	..	..
1993-94	205,822	190,047	55,110	102,340	212,266	18,633	784,218	81.0	..	..
1994-95	177,649	171,915	51,935	86,977	173,383	17,577	679,435	83.4	..	..
1994-95										
February	12,556	10,916	3,778	6,115	15,167	860	49,392	83.3	59,991	55,440
March	13,087	11,113	5,161	7,392	16,114	726	53,593	82.1	57,033	55,238
April	8,689	6,676	3,751	5,231	9,478	699	34,524	80.9	53,282	54,348
May	9,278	6,386	4,478	3,733	6,877	1,698	32,450	80.9	46,826	52,765
June	9,171	5,600	4,860	2,444	5,163	571	27,809	78.5	56,447	51,097
1995-96 p —										
July	11,803	6,071	4,990	4,539	9,632	844	37,879	81.4	48,858	49,765
August	17,264	14,800	5,534	10,529	22,418	1,445	71,990	88.4	50,244	48,886
September	18,760	20,424	4,777	12,787	19,676	1,499	77,923	87.8	46,630	48,800
October	20,176	24,649	3,633	13,032	21,125	1,800	84,415	88.1	49,933	49,587
November	16,521	22,509	2,037	9,639	15,522	2,475	68,704	86.8	49,248	51,418
December	10,051	15,485	1,943	3,917	6,799	1,625	39,819	82.4	53,269	54,154
January	10,798	12,833	1,966	4,890	11,159	1,399	43,044	85.9	58,614	57,121
February	13,676	11,140	3,850	6,319	16,748	871	52,604	85.2	63,394	59,807
March	13,053	10,263	4,085	7,899	16,425	662	52,387	83.8	59,594	62,124
April	11,934	9,648	3,517	6,556	12,746	620	45,022	84.2	64,372	63,828

(a) Trend estimates for the most recent months are subject to revision when data for the subsequent months become available.



### RELIABILITY OF APRIL TREND ESTIMATES FOR WOOL RECEIVALS

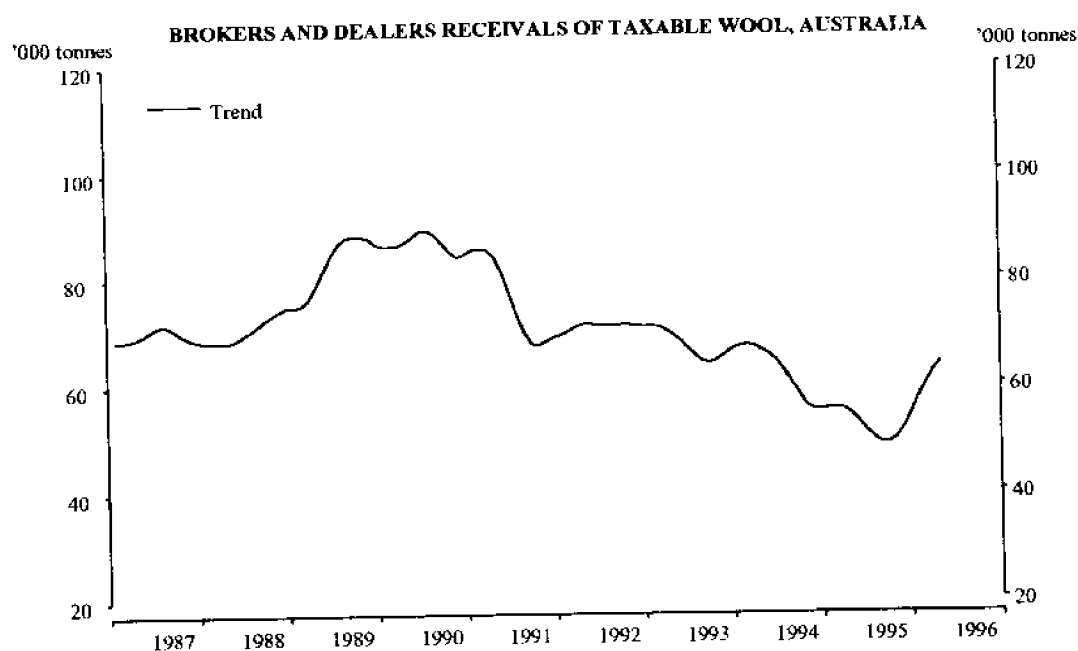
Readers should exercise care in the interpretation of trend data as the last six observations, in particular, are likely to be revised with either revisions to the underlying data or the addition of data for the month of May.

The table below shows, for wool receivals for the six months ended April:

- trend estimates as published;
- trend estimates assuming an increase in seasonally adjusted data for May of 9% on the April figure;
- trend estimates assuming a decrease in seasonally adjusted data for May of 9% on the April figure.

The percentage change of 9% was chosen because the average absolute monthly percentage change in the seasonally adjusted data since the inception of the series has been 9.28%

	<i>Trend as published</i>	<i>Trend change with seasonally adjusted May estimate</i>	
		+9%	-9%
	(tonnes)		
1995-96p			
November	51,418	51,260	51,491
December	54,154	53,873	54,279
January	57,121	57,013	57,215
February	59,807	60,070	59,534
March	62,124	62,882	61,112
April	63,828	65,376	62,042
May	—	67,570	62,539



## EXPLANATORY NOTES

### Introduction

This publication contains information (preliminary where indicated) on livestock slaughterings, meat production, stocks of frozen meat, exports of live sheep and live cattle, exports of fresh, frozen and processed meat, and whole milk intake by factories, market milk sales by factories and receivals of taxable wool by wool brokers and dealers.

### Livestock slaughterings and meat production

2. The statistics on slaughterings and meat production are based on a monthly collection from abattoirs and other major slaughtering establishments and include estimates of animals slaughtered on farms and by country butchers and other small slaughtering establishments.

3. Care should be taken when using this information as the figures only relate to slaughterings for human consumption and do not include animals condemned or those killed for boiling down.

4. Poultry slaughterings statistics have been compiled from returns supplied by commercial poultry slaughtering establishments. Producers in the Northern Territory and the Australian Capital Territory and the many very small producers are excluded from the collection; however, the statistics represent a high level of coverage.

### Live sheep and cattle exports

5. These tables contain statistics of the number of live sheep and cattle exported, the gross weight, gross value and unit value. Sheep or cattle exported for breeding are excluded.

### Milk

6. Tables 9 and 10 contain statistics collected by the Australian Dairy Corporation (ADC) on whole milk intake and market milk sales by factories.

### Wool receivals

7. The statistics in Table 11 show the amount of taxable wool received by brokers and dealers from wool producers. It excludes wool received by brokers on which tax has already been paid by other dealers (private buyers) or brokers.

8. The information shown is on the basis of the State in which wool has actually been received and does not necessarily reflect the production of wool in that State.

### Seasonal adjustment

9. Details of seasonally adjusted figures for livestock slaughterings, red meat, milk and wool are shown in Tables 1, 2, 9 and 11 respectively. Information on the methods used in seasonally adjusting these series is available on request.

### Trend Estimates and Sensitivity Analysis

10. A trend estimate is obtained by reducing the irregular component from the seasonally adjusted series. In this publication trend estimates are generally derived by applying a 13 term Henderson moving average to the seasonally adjusted series.

The 13 term Henderson, (like all Henderson averages) is symmetric, but as the end of a time series is approached, asymmetric forms of the average are applied. While the asymmetric weights enable the trend to be calculated for the latest month, it does result in revisions to the last six estimates as additional observations become available.

11. Sensitivity analysis indicates the potential magnitude and direction of revisions created to the last six estimates. It aims to show how a specified movement in the seasonally adjusted data in the next period will affect the trend path of the time series. By showing how sensitive the trend estimates are to the addition of new data, the analysis provides information which can be used in the assessment of the trend's stability. For further information, see *A Guide to Interpreting Time Series - Monitoring "Trends", an Overview* (1348.0) or contact the Assistant Director, Time Series Analysis on (06) 252 6345.

### Related publications

12. Users may also wish to refer to the following priced publication which is available on request:

*Livestock and Livestock Products, Australia* (7221.0)

*Apparent Consumption of Selected Foodstuffs, Australia 1994-95, Preliminary* (4315.0)

13. Current publications produced by the ABS are listed in the Catalogue of *Publications and Products, Australia* (1101.0). The ABS also issues, on Tuesdays and Fridays, a *Release Advice* (1105.0) which lists publications to be released in the next few days. The Catalogue and Release Advice are available from any ABS office.

### Next release date

14. The expected release date for the May 1996 issue of this publication is 3 July 1996. The date can be confirmed a few days prior to release by telephoning (06) 252 5226.

### Symbols and other usages

- p preliminary
- .. not applicable
- nil or rounded to zero

15. The figures shown in this publication have been revised where necessary and as a consequence may not agree with similar data shown in previous publications.

16. Where figures have been rounded, discrepancies may occur between sums of the component items and totals.

17. Unless indicated otherwise, Australian totals include data for all States and both Territories.

**W. McLennan**  
Australian Statistician

## **For more information . . .**

The ABS publishes a wide range of statistics and other information on Australia's economic and social conditions. Details of what is available in various publications and other products can be found in the ABS Catalogue of Publications and Products available from all ABS Offices.

### **ABS Products and Services**

Many standard products are available from ABS bookshops located in each State and Territory. In addition to these products, information tailored to the needs of clients can be obtained on a wide range of media by contacting your nearest ABS Office. The ABS also provides a Subscription Service for standard products and some tailored information services.

### **National *Dial-a-Statistic* Line**

0055 86 400

*Steadycorn P/L: premium rate 25c/21.4 secs.*

This number gives 24-hour access, 365 days a year, for a range of important economic statistics including the CPI.

### **Internet**

<http://www.statistics.gov.au>

A wide range of ABS information is available via the Internet, with basic statistics available for each State, Territory and Australia. We also have Key National Indicators, ABS product release details and other information of general interest.

## **Sales and Inquiries**

Keylink STAT.INFO/ABS  
X.400 (C:Australia,PUB:Telememo,O:ABS,FN:STAT,SN:INFO)  
Internet [stat.info@abs.telememo.au](mailto:stat.info@abs.telememo.au)

National Mail Order Service (06) 252 5249  
Subscription Service 1800 02 0608

### **Information Inquiries    Bookshop Sales**

SYDNEY	(02)	268 4611	268 4620
MELBOURNE	(03)	9615 7755	9615 7755
BRISBANE	(07)	3222 6351	3222 6350
PERTH	(09)	360 5140	360 5307
ADELAIDE	(08)	237 7100	237 7582
HOBART	(002)	205 800	205 800
CANBERRA	(06)	252 6627	207 0326
DARWIN	(089)	432 111	432 111



Client Services, ABS, PO Box 10, Belconnen ACT 2616

Produced by the Australian Government Publishing Service  
© Commonwealth of Australia 1996

Recommended retail price \$13.00



2721500004968  
ISSN 0728-4047